

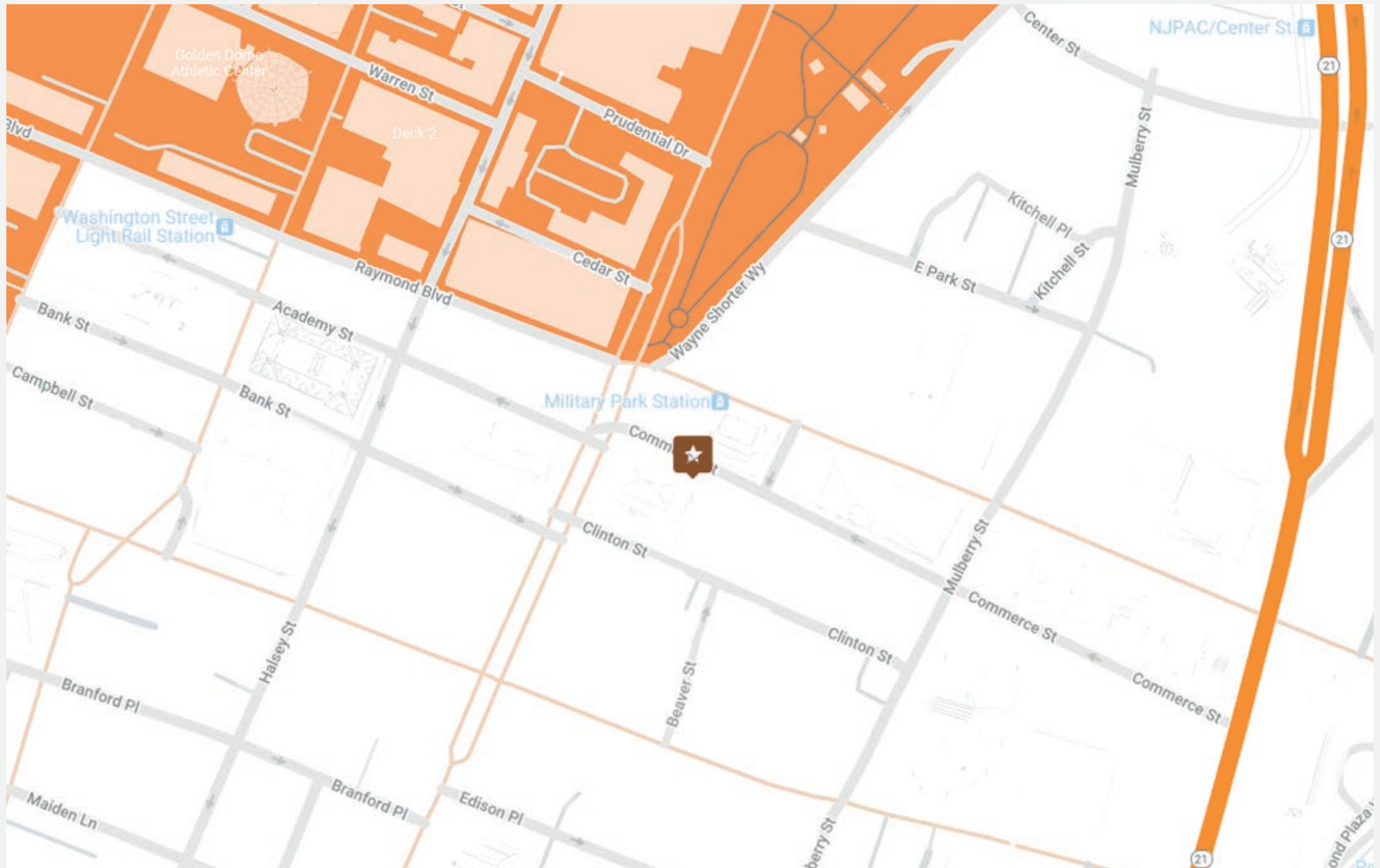


# 10 COMMERCE

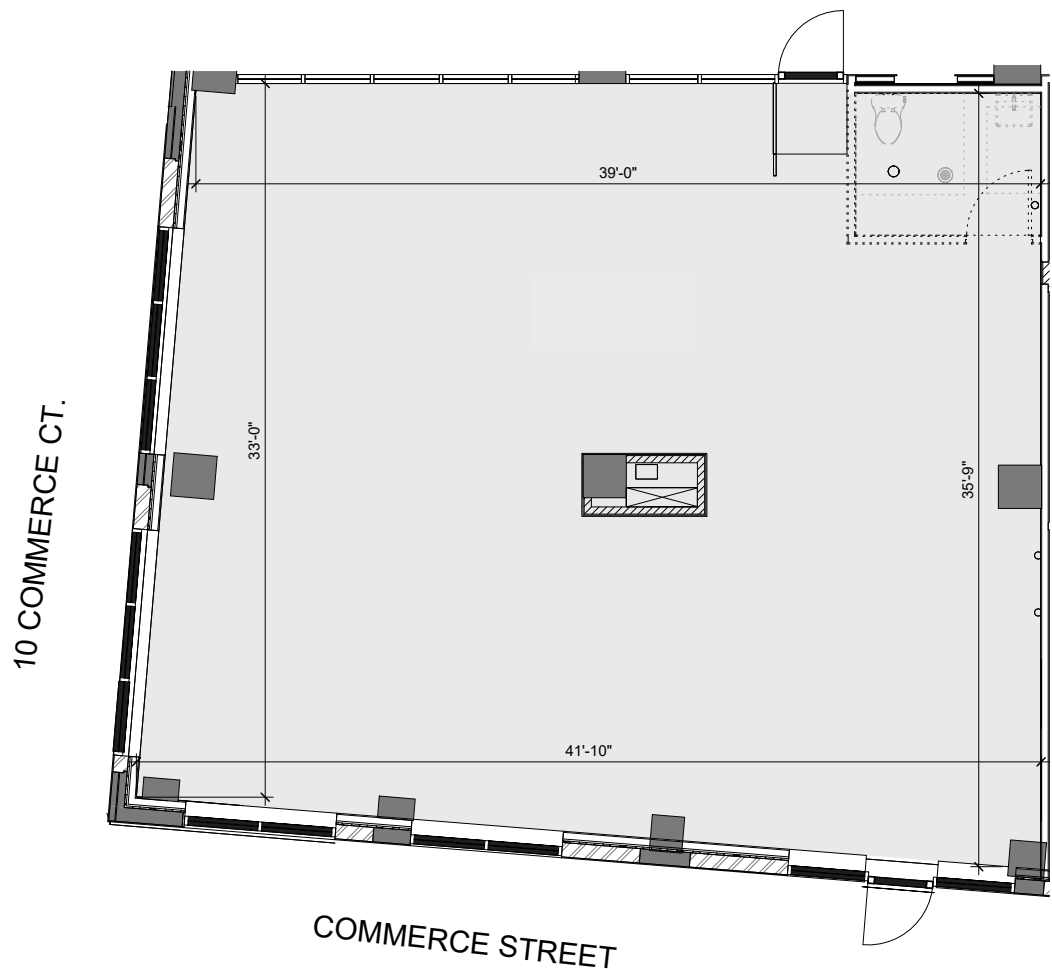
10 Commerce Ct, Newark, NJ 07102, USA

Located in downtown Newark, NJ, approximately ten miles west of the Manhattan borough of New York City. The property was developed on a 1.1-acre site in 1959 and is conveniently located within walking distance to Newark-Penn Station (11 minutes), NJ-Transit's Light Rail Military Park Station (three-minute walk), and NJ-Transit's bus station (three-minute walk). The subject property is also in close proximity to Interstate 280 (one mile north) and Interstate 95 (three miles east).

The property is steps away from Newark Penn Station, Gateway Center and the Prudential Center. Heavy foot traffic.



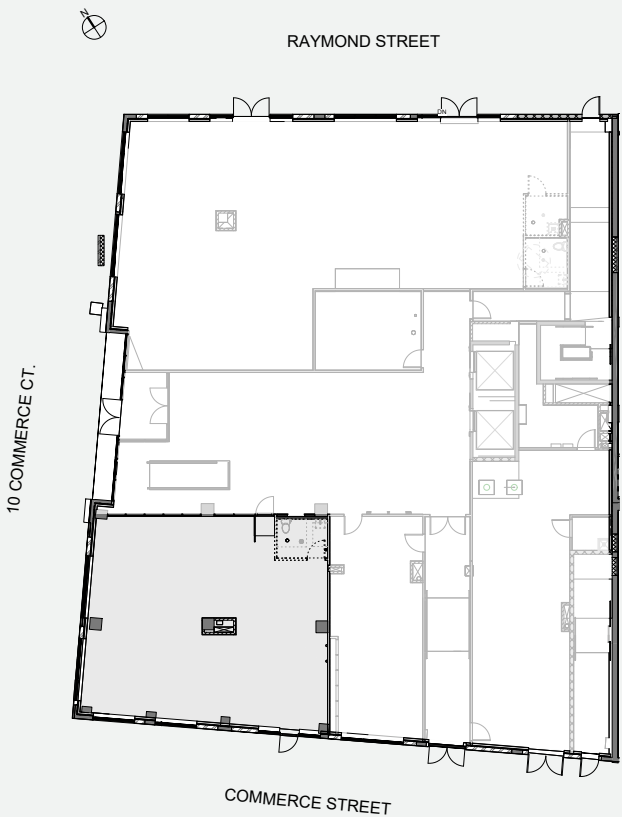
TOTAL AREA: 1,359 SF+/-



2 FLOOR PLAN  
1/4" = 1'-0"

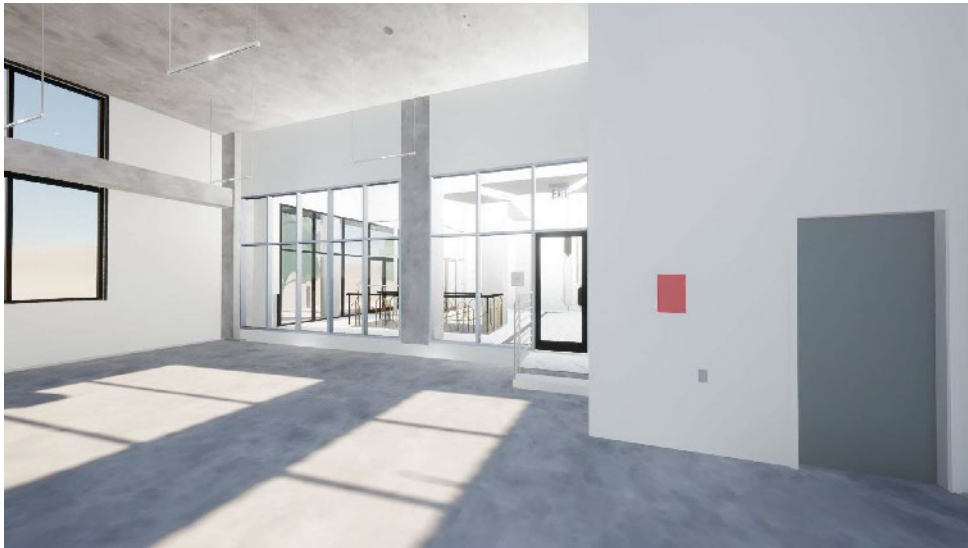
RETAILS FEATURES

- COMMERCIAL LEASING
- ADA COMPLIANT
- ONE BATHROOM
- ZONE / APPLICABLE USES
- ELECTRIC IN SPACE



1 KEY MAP  
1/8" = 1'-0"







skyemamange.com

For more info contact us  
by emailing **info@skyemange.com**  
or by calling **1-800-555-1212**.